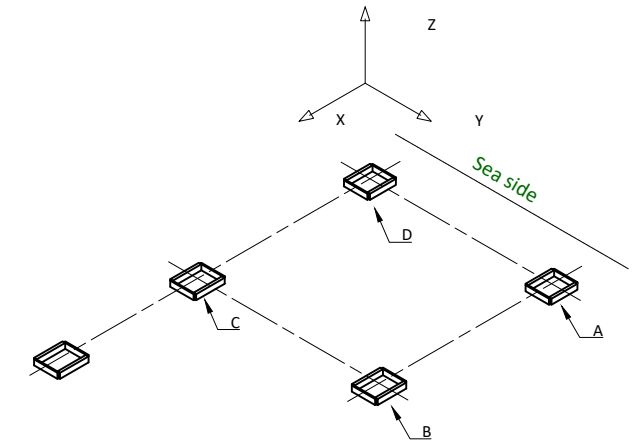
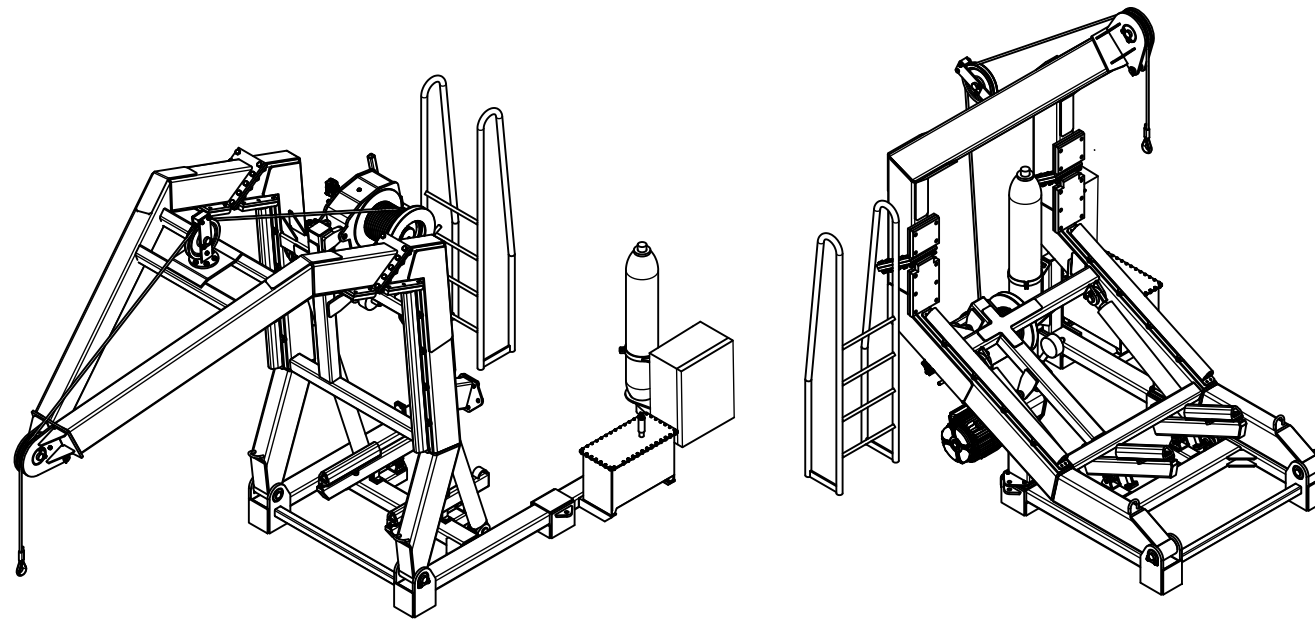
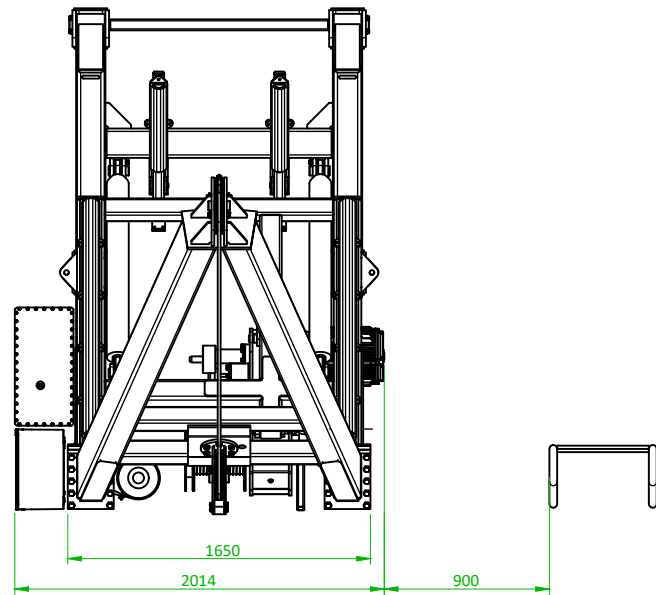


Sea side



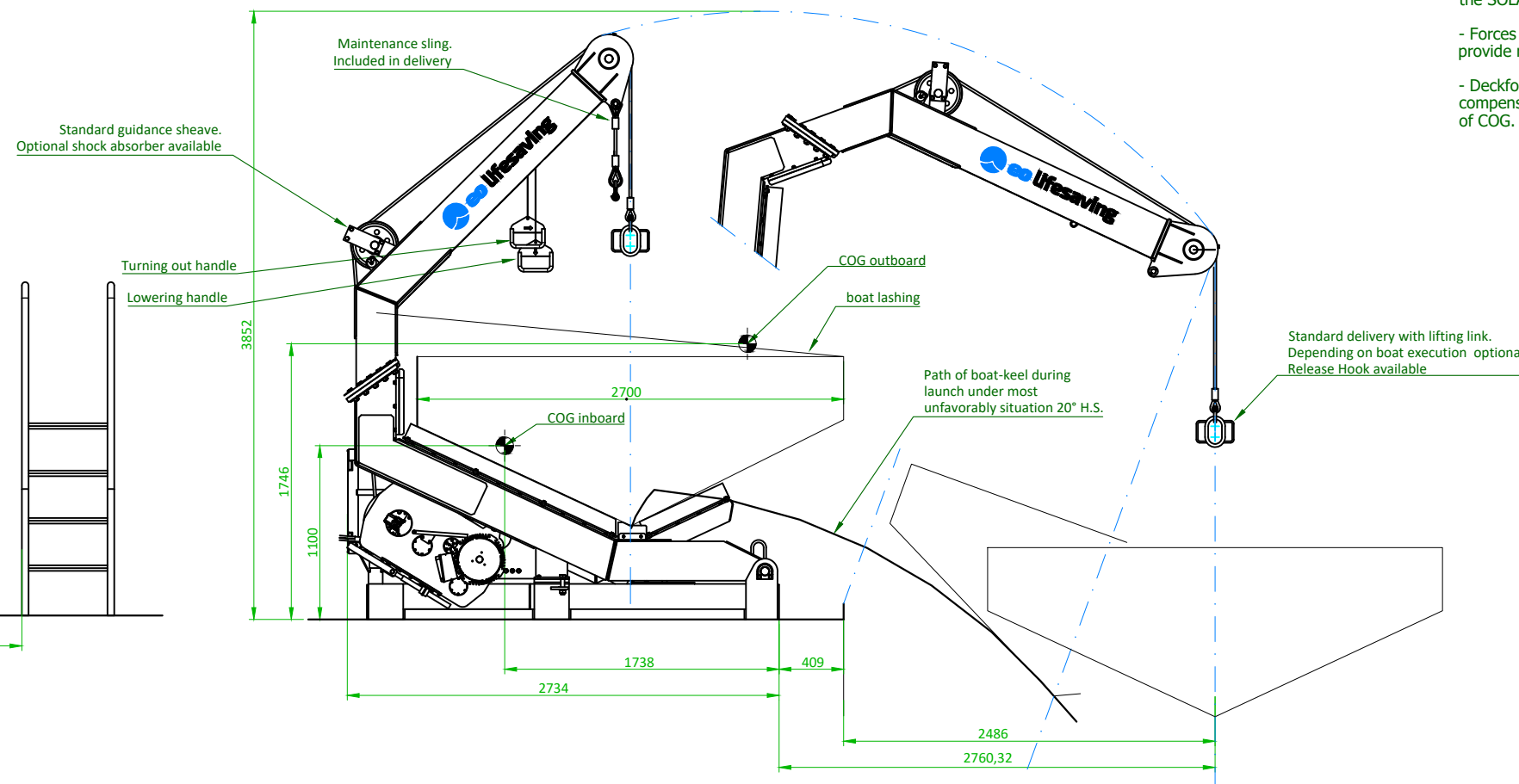
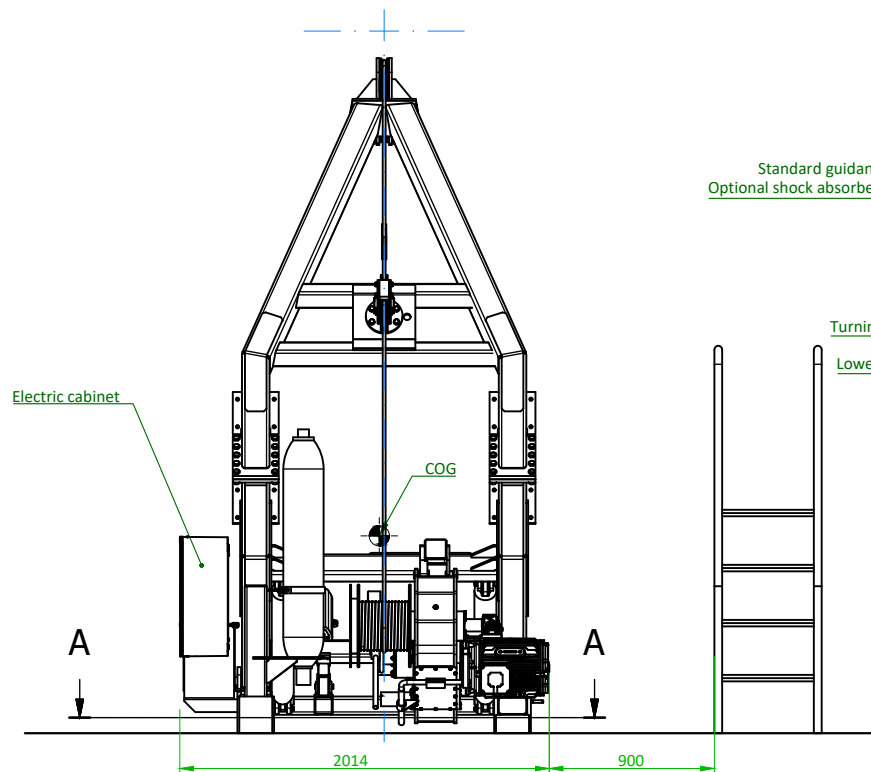
Support loads [kN] per system
(all forces mentioned are action forces, calculated with 10% overload)

		A	B	C	D
System inboard 20/10 roll	X	3,9	3,9	3,9	3,9
	Y	1,9	1,9	1,9	1,9
	Z	-5,6	-27	-27	-5,6
System outboard -20/10 roll	X	-3,9	-3,9	-3,9	-3,9
	Y	1,9	1,9	1,9	1,9
	Z	-72,6	51	51	-72,6

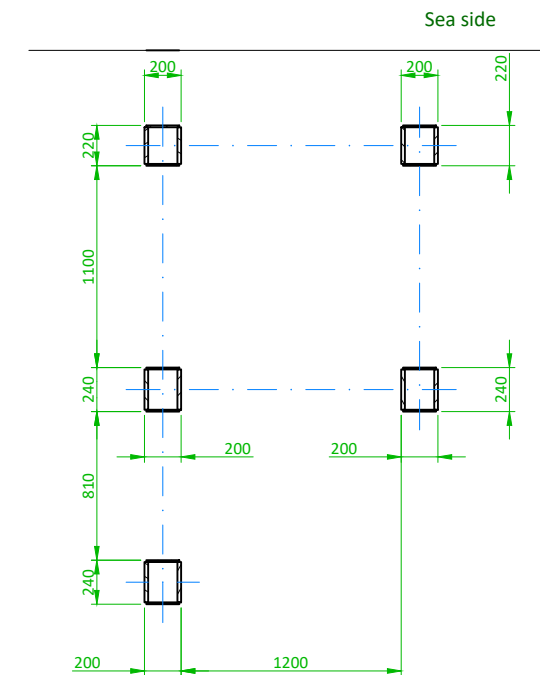
- Indicated forces are based on list and trim as mentioned in the SOLAS rules and regulation (20°/10° List and Trim).

- Forces are action forces and deck foundation should provide reaction strength.

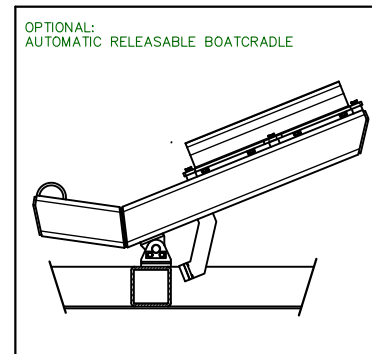
- Deckforces including 10 % additional Davit weight to compensate small fluctuations in system weight and position of COG.



Footprint on Deck
A-A (1 : 40)



Total weight (dry) approx.: 2240 kg



General Data	
Davit outreach:	2587 mm (from davit front edge)
Pivot angle:	65° Hydraulic
Minimum Working Load:	1 kN Gravity Lowering
Survival craft:	Rescue boat / Fast Rescue Craft
Safe Working Load (S.W.L.):	37.5 kN
Minimum Working Load:	1 kN (Gravity Lowering)
Maximum launch/recovery Load:	37.5 kN
Maximum Hoisting Load:	37.5 kN Electric / Manually

Winch Data:	
Winch manufacturer:	Maritime Deck Machinery b.v.
Winch type:	W-7416 E
Winch drive:	Electric - Manual
Electric motor version:	22.5 kW

Wire rope data:	
Diameter:	16 mm
Minimum Breaking Load:	245.98 kN, incl. pressed thimble
Rotation-resistant:	multi strand, non-rotating
Corrosion-resistant:	Galvanized, incl. pressed thimble

Lifting link data:	
Manufacturer:	Crosby
Type / Size :	A-344 / 6.7t
Minimum Breaking Load:	33.5 Ton
Corrosion-resistant:	Powder Coated

		Title: Arrangement & data for deck foundation DAF-375 E Low Creator: R. de Ridder Checked: - Approved: - Date: 10.11.2017	
Size: A1 Scale: - Units: mm Projection:		Drawing Nr.: C3-0512 Revision: E	The reproduction, distribution and utilization of this document as well as the communication of its contents to others without express authorization is prohibited. Offenders will be held liable for the payment of damages. All rights reserved in the event of the grant of patent, utility model or design.