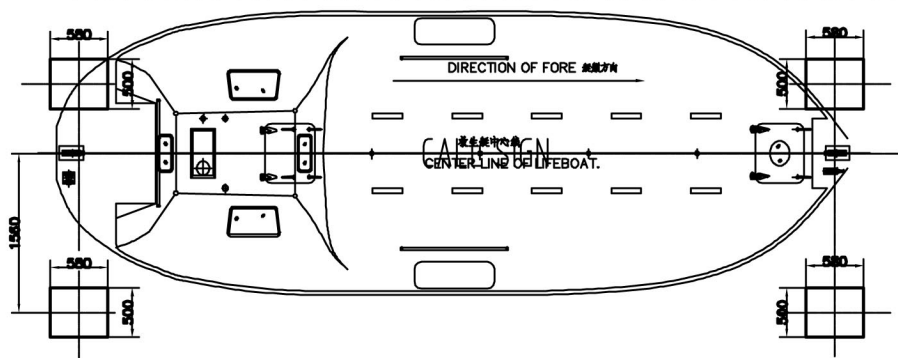
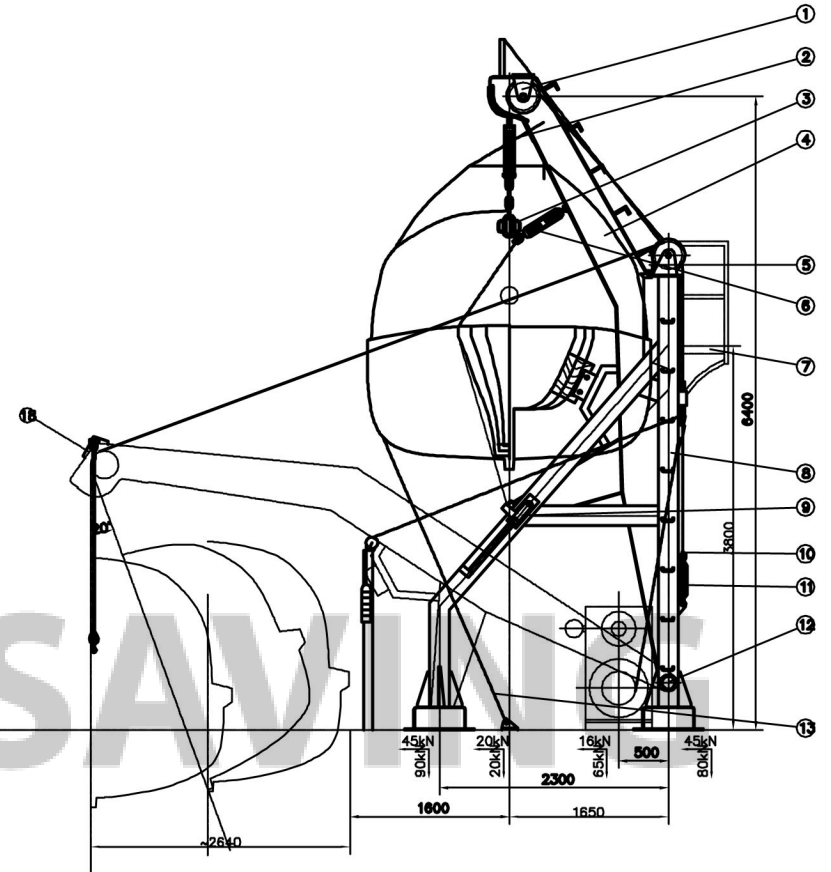


甲板布置图 ARR. OF DECK



救生艇

技术要求

1. 本吊艇架按1989《海船救生设备规范》及1974年国际海上人命安全公约1983年修正案要求设计。
2. 栏杆及扶梯由布置救生艇的设计师考虑。
3. 本吊艇架为左式，右置在船左舷，所用绞车为左机，右式艇架对称制造。

TECHNICAL REQUIREMENTS

1. THIS DAVIT INSTALLATION COMPLETELY COMPLIES WITH THE REQUIREMENTS OF 83 AMENDMENTS TO SOLAS 74.
2. HAND RAIL & LADDER SHALL BE CONSIDERED BY DESIGNER WHO ARRANGES LIFEBOAT.
3. THE DAVIT IS THAT OF LEFT ARRANGED ON PORTSIDE & MATCHED WITH LEFT WINCH RIGHT DAVIT SHOULD BE ARRANGED SYMMERICALLY.

NO	CODE	名称	QTY	MATL	SMG(h)	TOT(kg)	NOTE
13	215ZF511-02-0	抓钩装置 GRPE UNIT	2	ASSY.			
12	215SC511-03-0	转筒装置 TROT UNIT	2	ASSY.			
11	A3.5 GB561-65	开本钩扣 OPEN BUCKLE	2	ASSY.			
10	GT3.5 GB560-65	套环 SHABLE	2	235A			
9	930ZF2-02-0	止位装置 STOP UNIT	2	ASSY.			
8	215ZF518-04-0	底座 DAVIT FRAME	2	ASSY.			
7	215ZF518-03	安装平台 EMBARKATION PLATFORM	1	ASSY.			
6	215SC511-10-0	系艇装置 FASTENING UNIT	1	ASSY.	200		
5	215ZF518-04-0	限位装置 LIMIT UNIT	2	ASSY.	1.2	2.4	
4	215ZF518-02-0	吊艇臂 DAVIT ARM	1	ASSY.	850	1700	
3	215ZF518-01-0	吊艇链 ROAT FELL CHAIN	2	ASSY.	25	50	
2	215SC511-05-0	浮吊装置 FLOATING TACKLE	2	ASSY.	46.2	92.4	
1	215SC511-05-0	头吊装置 HEAD TACKLE	2	ASSY.	69.4	138.8	

NO	CODE	名称	QTY	MATL	SMG(h)	TOT(kg)	NOTE
18	215ZF518-11-0	吊艇架 HANGING UNIT	2	ASSY.	40		
17	215ZF518-07-0	转筒滑车及起艇装置 TACKLE AND ROAT FALL	1	ASSY.	267.5		
16	215ZF518-06-0	遥控装置 REMOTE CONTROL UNIT	1	ASSY.	330		
15	215ZF518-05	支梁桁架 STRUT	1	ASSY.			
14	215ZF360-03-0	带吊滑车组 TACKLE	2	ASSY.	180		

DESIGNED	MATERIAL ASSY.	PROD. NAME
CHECKED	WEIGHT(kg)-4830	LE85-1 重力倒槽式吊艇架
DE. IF SIA	SCALE 1: 25	
WORKED	DATE 196/12/07	DWG. NAME LE85-1 BOAT DAVIT
	SHEET 1 OF 1	PRODUCTION 215ZF518-00