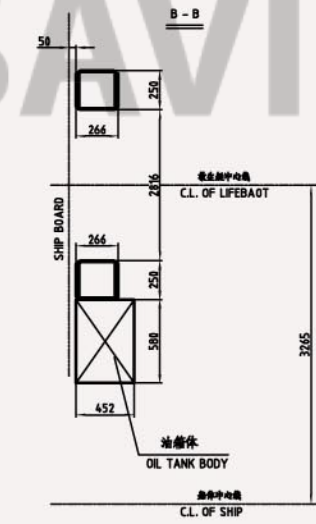
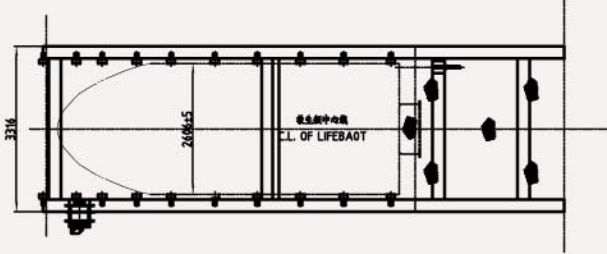
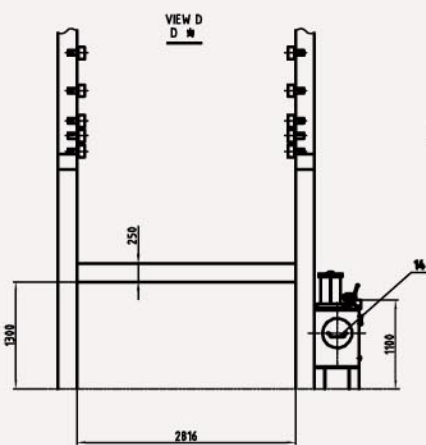
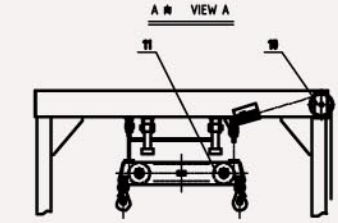
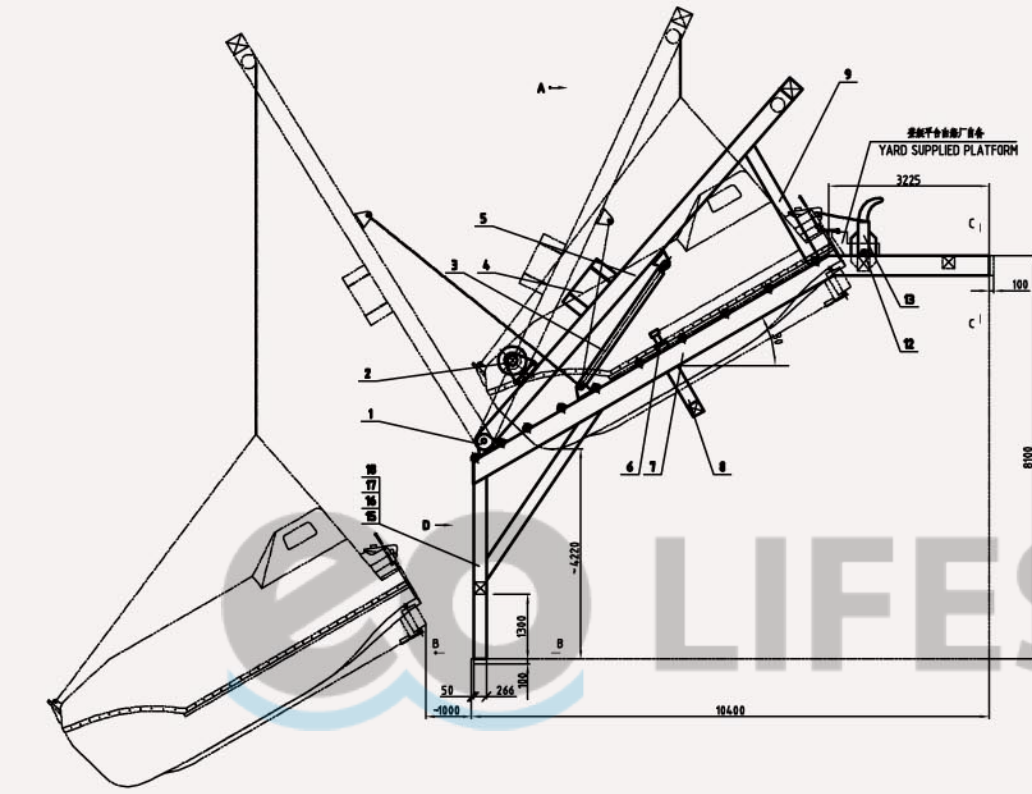


主要技术参数 MAIN TECHNICAL DATA	
最大工作负荷	MAX. WORKING LOAD 75 kN
最大起升负荷	MAX. HOISTING LOAD 56 kN
卷筒容量	CAPACITY OF WINCH DRUM 50 m
起升速度	HOISTING SPEED OF BOAT >3 m/min
钢丝绳规格	SIZE OF WIRE OF WINCH 18×19-20-1770
液压马达	MOTOR OF HYDRAULIC 泵站电动机 MOTOR OF OIL PUMP
	MODEL NO.Y160L-4-H
	VOLATAGE FREAUENCE 440V/60Hz
	OUTPUT FREQ 15kW
适用救生艇	SUITABLE LIFE BOAT 江限7.5 m JY-FF-7.5

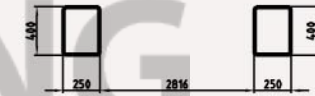


技术要求

1. 本装置满足-1974年国际海上人命安全公约(MSC.47(66))及国际救生设备规则(MSC.48(66))之要求。

TECHNICAL REQUIREMENT

1. THE APPLIANCE CONFORM TO -1974 SLOAS [MSC.47(66)] AND INTERNATIONAL LSA CODE [MSC.48(66)].



NO.	CODE	NAME	QTY.	MATL.	SING.	TOT.	NOTE
18	2.5x10 GB867-86	铆钉 RIVET	1	HL2			
17	938ZF-215MP-45/B	铭牌 NAME PLATE	1/1	H62			
16	938ZF-215MP-54	警告牌 WARNING PLATE	1	H62			
15	938ZF-215MP-31	识别牌 IDENTIFICATION PLATE	1	H62			
14	215ZF516-15-4(13)	释放钩 RELEASE HOOK UNIT	1	ASSEM.		375	
13	215ZF516-11-0	释放钩 RELEASE HOOK UNIT	1	ASSEM.		80	
12	215ZF516-12-0	后吊钩 AFT LASHING	2	ASSEM.		25	
11	215ZF516-13-0	浮吊梁 FLOATING BEAM	1	ASSEM.		250	
10	215ZF516-14-0	艇架落艇艇架 BOAT FALL UNIT	1	ASSEM.		270	
9	215ZF516-10-0	臂架 ARM SUPPORT	2	ASSEM.		220	
8	215ZF507-04-0	中横梁 MIDDLE CROSS BEAM	1	ASSEM.		420	
7	215ZF507-02-0	臂架 RAMP	1	ASSEM.		2900	
6	215ZF516-06-0	吊钩 FITTED UNIT	2	ASSEM.		104	
5	215ZF507-01-0	臂架 DAVIT ARM	1	ASSEM.		1700	
4	215ZF516-04-0	吊钩 STOP FRAME	2	ASSEM.		108	
3	215ZF516-03-0(3)	液压系统 HYDRAULIC UNIT	1	ASSEM.		445	
2	215ZF516-02-0(3)	液压系统 HYDRAULIC WINCH	1	ASSEM.		380	
1	215ZF516-01-0	卷筒 PEVOT	2	ASSEM.		104	

DESIGNED	MATERIAL	ASSCH	PROD. NAME	FH75 降落装置
CHECKED	WEIGHT	~		FH75 LAUNCHING APPLIANCE
DR. OF STA.	SCALE	1:50	DWG. NAME	总图
VERIFIED	DATE			G.A.
DRAWN	SHEET 1 OF 1		PROJ. NO.	215ZF507-00
			DWG. No.	215ZF507-00
			DRG. FILE	215ZF507-00